

Human HVEM/TNFRSF14 Protein

Cat. No. HVE-HM211

Description

Source	Recombinant Human HVEM/TNFRSF14 Protein is expressed from HEK293 with hFc tag at the C-Terminus. It contains Leu39-Val202.
Accession	Q92956-1
Molecular Weight	The protein has a predicted MW of 44.3 kDa. Due to glycosylation, the protein migrates to 60-70 kDa based on Tris-Bis PAGE result.
Endotoxin	Less than 1EU per μg by the LAL method.
Purity	> 95% as determined by Tris-Bis PAGE

Formulation and Storage

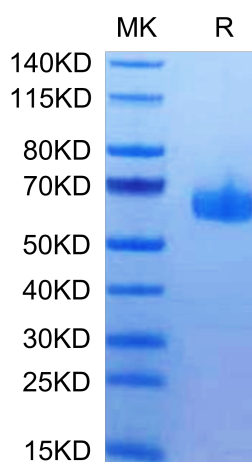
Formulation	Lyophilized from 0.22 μm filtered solution in PBS (pH 7.4). Normally 8% trehalose is added as protectant before lyophilization.
Reconstitution	Centrifuge the tube before opening. Reconstituting to a concentration more than 100 $\mu\text{g}/\text{ml}$ is recommended. Dissolve the lyophilized protein in distilled water.
Storage	-20 to -80°C for 12 months as supplied from date of receipt. -80°C for 3-6 months after reconstitution. 2-8°C for 2-7 days after reconstitution. Recommend to aliquot the protein into smaller quantities for optimal storage. Please minimize freeze-thaw cycles.

Background

Herpesvirus entry mediator (HVEM), also known as tumor necrosis factor receptor superfamily member 14 (TNFRSF14), is a human cell surface receptor of the TNF-receptor superfamily. Two TNF superfamily ligands lymphotoxin α (TNF- β) and LIGHT (TNFSF14) are identified as cellular ligands for HVEM and initiate the positive signaling.

Assay Data

Tris-Bis PAGE

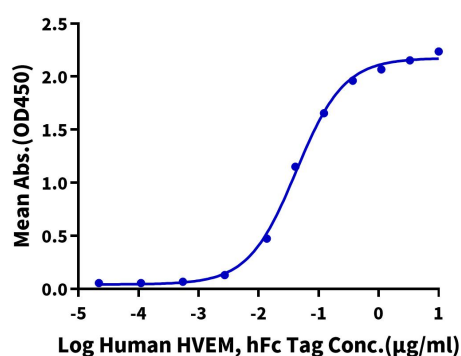


Human HVEM on Tris-Bis PAGE under reduced condition. The purity is greater than 95%.

ELISA Data

Human HVEM, hFc Tag ELISA

0.1 μg Human BTLA, His Tag Per Well

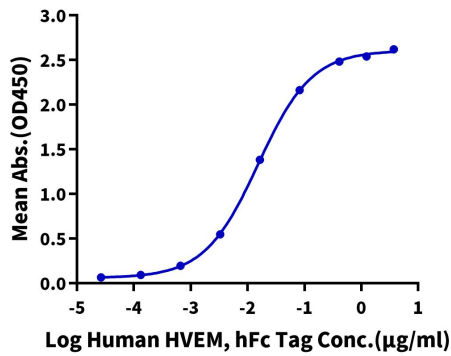


Immobilized Human BTLA, His Tag at 1 $\mu\text{g}/\text{ml}$ (100 $\mu\text{l}/\text{Well}$). Dose response curve for Human HVEM, hFc Tag with the EC50 of 42.5ng/ml determined by ELISA (QC Test).

Assay Data

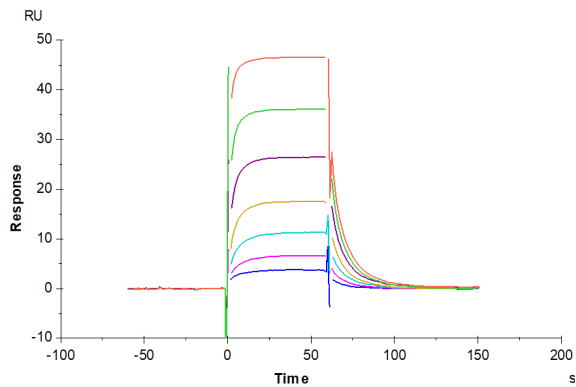
ELISA Data

Human HVEM, hFc Tag ELISA

0.2 μ g Human LIGHT, His Tag Per Well

Immobilized Human LIGHT, His Tag at 2 μ g/ml (100 μ l/Well) on the plate. Dose response curve for Human HVEM, hFc Tag with the EC₅₀ of 15.3ng/ml determined by ELISA.

SPR Data



Human HVEM, hFc Tag captured on CM5 Chip via Protein A can bind Human CD160, His Tag with an affinity constant of 1.44 μ M as determined in SPR assay (Biacore T200).